

## Wheat Ridge Apartment Construction Update

After over five months of site work and construction, the Wheat Ridge Apartments building is now rising above ground. The foundation is finished, the first few rounds of plank have been installed, and half of the steel is set. Though there have been delays due to the record rainfall we've been having, the project team has worked hard to keep things on track for a fall 2019 finish.

You may watch the progress live from our website, [FairmountHomes.org](http://FairmountHomes.org), by clicking on "Campus Happenings" and then clicking on the link to Paul Risk Construction's "Behind the Build" website.



Fairmount *Perspective* is published quarterly for the residents, staff, volunteers and friends of Fairmount, a Christian retirement community governed by a Board from the Weaverland Conference of the Old Order Mennonite Church.

### Core Values

Community • Compassion  
Dignity • Integrity  
Quality • Teamwork  
Trust

### Board of Directors

#### CHAIRMAN

Kenneth N. Burkholder

#### VICE CHAIRMAN

Ernest H. Hahn

#### SECRETARY

James E. Witmer

#### TREASURER

Edwin N. Martin, Jr.

Lester K. Burkholder

Wilmer W. Hoover

Dale A. Martin

Carl G. Sensenig

Paul M. Zimmerman

#### PRESIDENT/CEO

Jerry D. Lile

#### V.P. OF OPERATIONS &

#### SENIOR EDITOR

Kent E. Richard

#### DIRECTOR OF MARKETING

Mitchell Hanna

#### MANAGING EDITOR

Carol Swailes

#### EDITORIAL CONSULTANT

Ellen Livingood

#### Photo Credits

Jacob Keeler: page 1

Mitchell Hanna: page 1

Carol Swailes: page 1, 2 and 6

*Fairmount complies with applicable Federal civil rights laws and does not discriminate on the basis of race, color, national origin, age, disability, or sex.*

*Fairmount cumple con las leyes federales de derechos civiles aplicables y no discrimina por motivos de raza, color, nacionalidad, edad, discapacidad o sexo.*

*Fairmount 遵守適用的聯邦民權法律規定，不因種族、膚色、民族血統、年齡、殘障或性別而歧視任何人。*

*Please visit our website for additional information and to download an Application for Residency. [www.FairmountHomes.org](http://www.FairmountHomes.org)*

# Team Members—Our Greatest Asset

## *The President's Perspective*

"How has Fairmount maintained such a positive reputation in the community for so many years?" I'm often asked.

While there's no simple answer, I am convinced that the key is the quality of our team members. They are our greatest asset! But for staff to continue to provide our residents with top-level care, we must very intentionally support them in a variety of ways.

First, we equip our managers with tools to help them select excellent team members. For example, we have developed interview questions that focus on our seven core values: community, compassion, dignity, integrity, quality, teamwork, and trust. These questions help identify prospective team members who will be able to carry out these values even when faced with challenging situations.

Also, we are constantly looking for ways to improve our leadership skills. Currently 20 of our leaders are studying the leadership book, *The Way of the Shepherd*, by Dr. Kevin Leman and Bill Pentak. Using a contemporary parable of the sheep and shepherd relationship, the book unpacks how to lead people so they view their work as a calling rather

than a job, and a place to belong rather than just a place to work.

Our Human Resources Director Susan Howard is doing a great job of

*"In all our ways acknowledge Him and He shall direct our paths." Proverbs 3:6*

leading this study, focusing on one chapter each month and asking challenging questions that relate to our everyday situations. The first chapter encourages leaders to get to know their "flock," one "sheep" at a time. It is critical that Fairmount's leaders know their team members, support them well during difficult times, and praise them for success.

If we don't care for our team members, they can't care well for our residents. So our Fairmount leaders want to follow our role model, Jesus, the greatest Shepherd. ➤



Jerry D. Lile  
President/CEO

## Team Members Recognized for 555 Years

The highlight of the recent staff Christmas Fellowship Meal was the recognition of 42 team members celebrating five-year increments of service with a cumulative total of 555 years. Arlene Hoover was recognized for 40 years and Mary Shirk for 30 years. Jennifer Roberts and Esther Stoltzfus for 25 years.

As Kent Richard, VP of Operations, stated in his introductory remarks, "2018 is Fairmount's 50th anniversary year. It's a great time to look back and thank God for His mercies and His kindness to us for what is now several generations.

"Our excellent staff have been very engaged with our residents from

the very first day, focused on person-directed living. Thank you, fellow team members, for nurturing the original passion and continuing to advance the core values of Community, Compassion, Dignity, Integrity, Quality, Teamwork and Trust into the next 50 years!" ➤

# Wheat Ridge Apartments



The hill where Fairmount stands today was referred to as Fairmount Hill by local residents for over 150 years. Home to nearly 400 residents, Fairmount's campus still provides breathtaking views and the Fairmount team remains committed to faith, family and community.

## Choose from Many Options

Choose from eleven different floor plans, including studio, one bedroom, one bedroom with den, and two-bedroom apartments. All include spacious walk-in closets.

Additionally, those who enjoy the outdoors and sitting in the sunshine can do so in the comfort of the covered patio or balcony included with each Wheat Ridge Apartment.

## Meet and Mingle

Join friends in the wellness room to get your workout and maintain your healthy lifestyle. Our Wheat Ridge Gathering Room, with a full kitchen, can be reserved for family reunions and holiday meals, as well as accommodate our numerous daily activities. You can stop by the library and check out some reading material after picking up your mail from the 1st floor mailbox. Stay connected with friends and family with our Wi-Fi connection.

## Cats Back Café

The Cats Back Café is the ideal place to gather with your friends and neighbors for some Lancaster County cuisine! Fairmount's Dining staff home-cooks three hot meals each day. The renovated dining room features a sunny casual eating lounge where you can grab some coffee and catch up on what's happening with your neighbors.

## What's Included

Included in the monthly maintenance fee are real estate taxes, heating, air conditioning, electric, garbage removal, appliance upkeep, building maintenance, mowing, landscaping and snow removal, and more.

## Connect with Friends

The beautifully landscaped courtyard will feature a bocce court and fire pit for connecting with friends on pleasant summer days or crisp autumn evenings.

## Enjoy the Amenities

Wheat Ridge Apartment residents enjoy the same amenities as all other residential living residents: multiple dining venues, wood-shop, scheduled shopping trips and activities, chapel services, access to nature trails, a fitness center, and peace of mind knowing you have priority to higher levels of care should it ever be needed.

## Live Independently

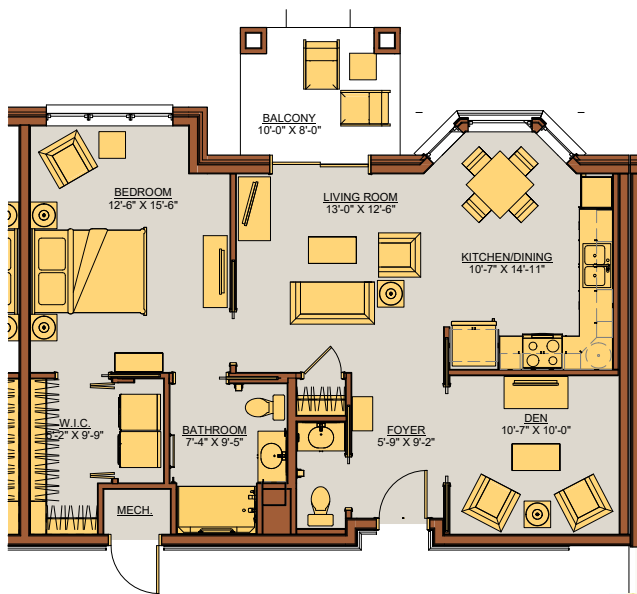
All of our apartments come fully equipped with a full-size refrigerator, range, oven, microwave, washer and dryer.



# Wheat Ridge Apartments

UNIT NAME	SQUARE FOOTAGE	UNIT SPECIFICATIONS	UNITS AVAILABLE	AVAILABLE ON FLOOR(S)
<b>Akron</b>	595	Studio	1	1
<b>Bareville</b>	597	1 bedroom/1 bathroom	4	1, 2, 3, 4
<b>Brownstown</b>	828	1 bedroom + den/1.5 bathrooms	2	1
<b>Cocalico</b>	865	1 bedroom + den/1.5 bathrooms	4	1, 2, 3, 4
<b>Conestoga</b>	875	1 bedroom + den/1.5 bathrooms	1	1
<b>Farmersville</b>	880	1 bedroom + den/1.5 bathrooms	12	1, 2, 3, 4
<b>Hahnstown</b>	910	1 bedroom + den/1.5 bathrooms	4	1, 2, 3, 4
<b>Hinkletown</b>	955	1 bedroom + den/1.5 bathrooms	3	2, 3, 4
<b>Murrell</b>	1045	2 bedrooms/2 bathrooms	3	2, 3, 4
<b>Talmage</b>	1045	2 bedrooms/2 bathrooms	8	1, 2, 3, 4
<b>Voganville</b>	1422	2 bedrooms/2 bathrooms	3	2, 3, 4

\* All dimensions are approximate and subject to slight variations



**Farmersville Floor Plan**  
880 sq. ft. / 1 bedroom / den / 1.5 bathrooms



**Voganville Floor Plan**  
1422 sq. ft. / 2 bedrooms / 2 bathrooms

**Experience all the comforts of home here in a Wheat Ridge Apartment!** Now is the time to consider joining the Fairmount community, especially with the opportunity to live in a brand-new apartment, and personalize your new home. For a private tour, please call Mitchell Hanna at 717.354.1810 or email [mitchellh@FairmountHomes.org](mailto:mitchellh@FairmountHomes.org).

# New Wheat Ridge Apartment Residents Can't Wait!

Allen and Mabel Martin are excited about their upcoming life change. "We can't wait to move into our new Wheat Ridge apartment!" they exclaim. "Many people resist moving into a retirement home, but not us. We so look forward to giving up all of the responsibilities of home ownership, especially with an acre of grass to mow!"

The Martins had already downsized their lives in 2013 when they retired from their business, Martin's Bike Shop, and turned it over to their son Dale and his four sons. Allen's father had started the business, and Allen took it over in the early 1970s. He and Mabel both worked to grow the small bike shop into a company that now sells, installs, and repairs fitness equipment for large institutions all over the country.

Their new, third-floor, corner Wheat Ridge Apartment will be the Martins' first new home since 1964 when they built their house in nearby Hahnstown a year after their wedding. They had been on Fair-



*Allen and Mabel Martin consult with Bev Weaver from the Marketing Department on one of their many choices.*

mount's waiting list, but hearing about the Wheat Ridge Apartment building project was the incentive they needed to act now.

The Martins have a long history and many family connections with Fairmount. Mabel's great aunt became a resident of Fairmount Rest Home soon after it opened in 1968. Her mother, one of her aunts, and one of Allen's uncles also were residents. Allen himself spent a month in Rehab

after surgery a few years ago, and their son Dale serves on Fairmount's Board of Directors.

As for their new home, what they find most exciting is the opportunity to choose so many of the features. "I am so impressed by all of the options we have: wall and appliance colors, cabinetry, flooring, countertops—even the backsplash and the number and placement of electrical outlets!" says Mabel enthusiastically. "We can't wait to come here!" ➤

## 4<sup>th</sup> Annual Community Book Sale

Mark your calendar, invite your friends, and come out for a morning of fun and discovery at Fairmount's 4th Annual Community Book Sale on Saturday, April 27, from 6:00 a.m. until noon. A wide assortment of books will be available. Book donations are now being accepted, so please consider reducing your personal library so that other readers and Fairmount can benefit. Books (other than secular fiction, encyclopedias, or Reader's Digest Condensed Books) may be dropped off at the Wheat Ridge or Crest View front desk. All proceeds will go to Fairmount's Sharing Fund. ➤





# Fairmount

333 Wheat Ridge Drive  
Ephrata, PA 17522-8558  
717.354.1800  
[www.FairmountHomes.org](http://www.FairmountHomes.org)

Non-Profit Org.  
U.S. Postage  
**PAID**  
Ephrata, PA  
Permit No. 50

**Mailing List Update:** If you wish to have your name removed from the mailing list, please call 717.354.1800, write the Managing Editor at the address above, or email [carols@FairmountHomes.org](mailto:carols@FairmountHomes.org).  
*Perspective* issues are available at [www.FairmountHomes.org](http://www.FairmountHomes.org).



**Electronic Service Requested**



## Items of Interest

### *Ham & Cheese Fundraiser*

Our annual ham-and-cheese sandwich fundraiser, held jointly with the Weaverland Conference Youth for Truth, is coming up soon. Sandwiches may be ordered until March 1 at the Wheat Ridge or Crest View front desk, or by calling 717.354.1800. The pick-up date will be March 9. Proceeds will be used for a project enhancing residents' lives.

### *Free "Right-sizing" Seminar*

Fairmount will host a free presentation, *Moving Up: How to Make a S.M.A.R.T. Move*, on Wednesday, March 13, at 10:00 a.m. in the Wheat Ridge Chapel. The presenter will be Margit Novack, President of Moving Solutions, who will tackle how to plan for a move and "right-size" belongings. Margit will share her expertise on how to navigate the emotional roadblocks of a move, advise on what items to keep, show how to make your new space work well, and help you become aware of pitfalls to avoid when moving.

For more information or to RSVP, please contact the Fairmount Marketing office by calling 717.354.1811, or email [maibox@FairmountHomes.org](mailto:maibox@FairmountHomes.org).



## February Quilting Days

**Saturday, February 16**  
**Tuesday, February 19**  
**Wednesday, February 20**

8 am to 4 pm  
(lunch served daily)

Farm Crest  
Community Room  
1100 Farm Crest Drive  
Ephrata, PA

**Save the Dates &  
Plan to Join Us**

